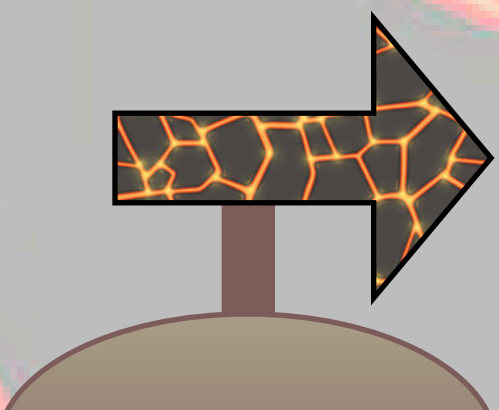
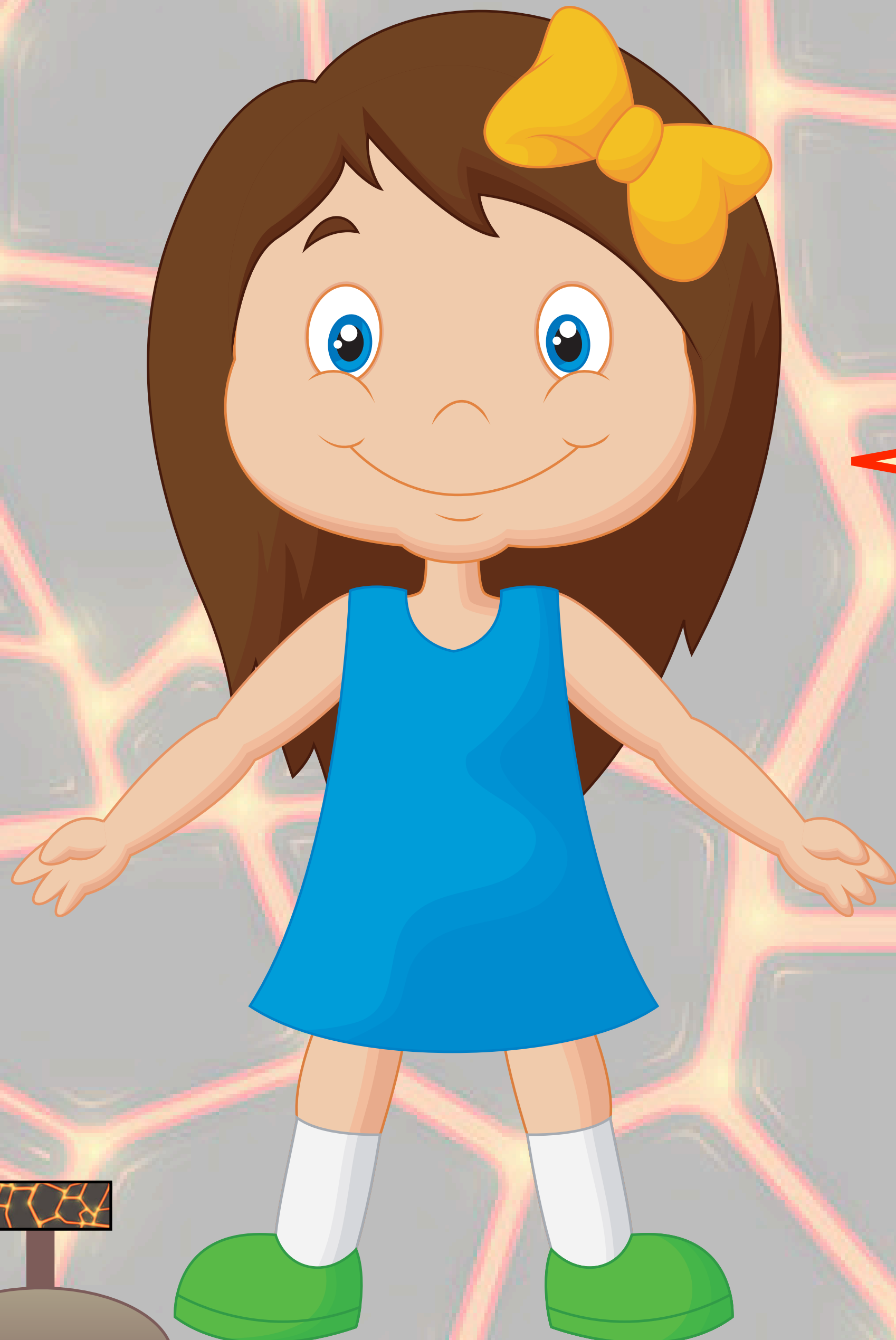


# VOLCANOES

Learning Objective:

To compare a volcanic area  
to a non-volcanic area.





Living in volcanic areas can be very different to living in non-volcanic areas.

Let's have a look at two areas, **Hawaii** (volcanic) and **England** (non-volcanic) to see what is similar and different. What do you think we might find?





This is Hawaii! Is it different to where you live?







This is England! Does it look like where you live?





Hawaii is a state of the United States of America. It is a collection of volcanic islands in the ocean, west of America. There are many active volcanoes on the islands of Hawaii.

The capital city of Hawaii is **HONOLULU**.



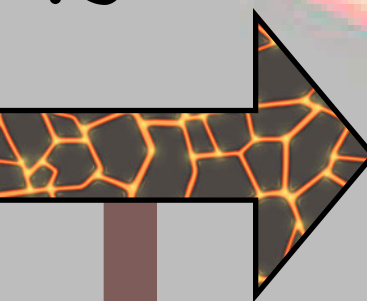
London

England is a country in the United Kingdom. It borders Scotland and Wales. England has mainly low hills and grassy plains.

The capital city of England is **LONDON**.



Honolulu







What is different about a city in a volcanic area and a city in a non-volcanic area?  
**Think, pair, share**





Let's look at some  
images of Hawaii and  
see how this volcanic  
area is similar and  
different to where you  
live.

Discuss what you think  
with a partner.







This is Hawaii's landscape. How is it similar/different to the land where you live?

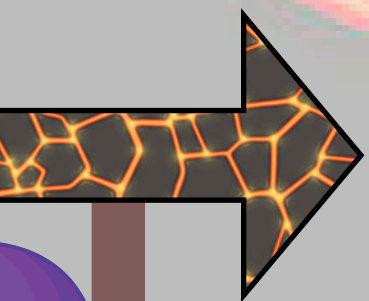
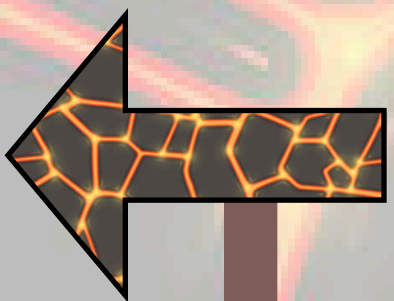


Would it be easy to build houses in this area?





This is a garden in Hawaii. How is it similar/different to a garden where you live?







These are animals found in Hawaii. How are they similar/different to animals where you live?

Do you know what these animals are?







Here are some houses in Hawaii. How are they similar/different to the houses where you live?

Are these houses built on flat land?  
Why/why not?







It is usually hot  
and humid in  
Hawaii. How is  
this  
temperature  
similar/different  
to where you  
live?

What kind of weather do you have  
where you live? Does it change  
throughout the year?







These are some activities you can do in Hawaii. How are these similar/different to the activities you can do where you live?

Have you ever tried any of these activities?





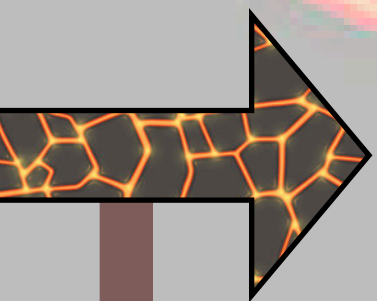
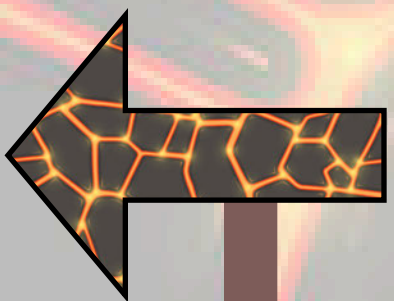
The active volcanoes in the Hawaiian area sometimes erupt or threaten to erupt.

How does this affect the Hawaiian people?

**Are there any dangerous threats where you live?**



How often do you think volcanoes erupt in Hawaii?





# Plenary



Which city would be the best place for these professionals to live?  
**LONDON** or **HONOLULU**?

A tube driver  
A surfing instructor  
A volcanologist (volcano scientist)  
A Lloyds bank manager  
A teacher  
A Queen's guard

